

Climate-ADAPT Urban Webinar

23 October 2019, 11:00-12:00 CEST



Briefing paper

The European adaptation platform Climate-ADAPT (<https://climate-adapt.eea.europa.eu/>) aims to support Europe in adapting to climate change, helping users at all governance levels, including local, to access and share relevant data and information to support developing and implementing adaptation policies and actions.

The impacts of climate change experienced by urban areas in Europe differ based on their geographical location and their specific vulnerabilities. The changing climate affects many aspects of the urban living, including the provision of essential services such as transport, water, energy, housing, health care, and social services. The local level has a key role in planning and implementing adaptation actions to enhance the climate resilience of European cities and towns.

Climate-ADAPT includes much data and information relevant for urban adaptation, including publications, reports, research projects, case studies, and adaptation options that can be used to support local action by decision-makers. In addition, Climate-ADAPT has two specific urban decision support tools that are among the most visited elements of the platform: the Urban Adaptation Support Tool and the Urban Adaptation Map Viewer.

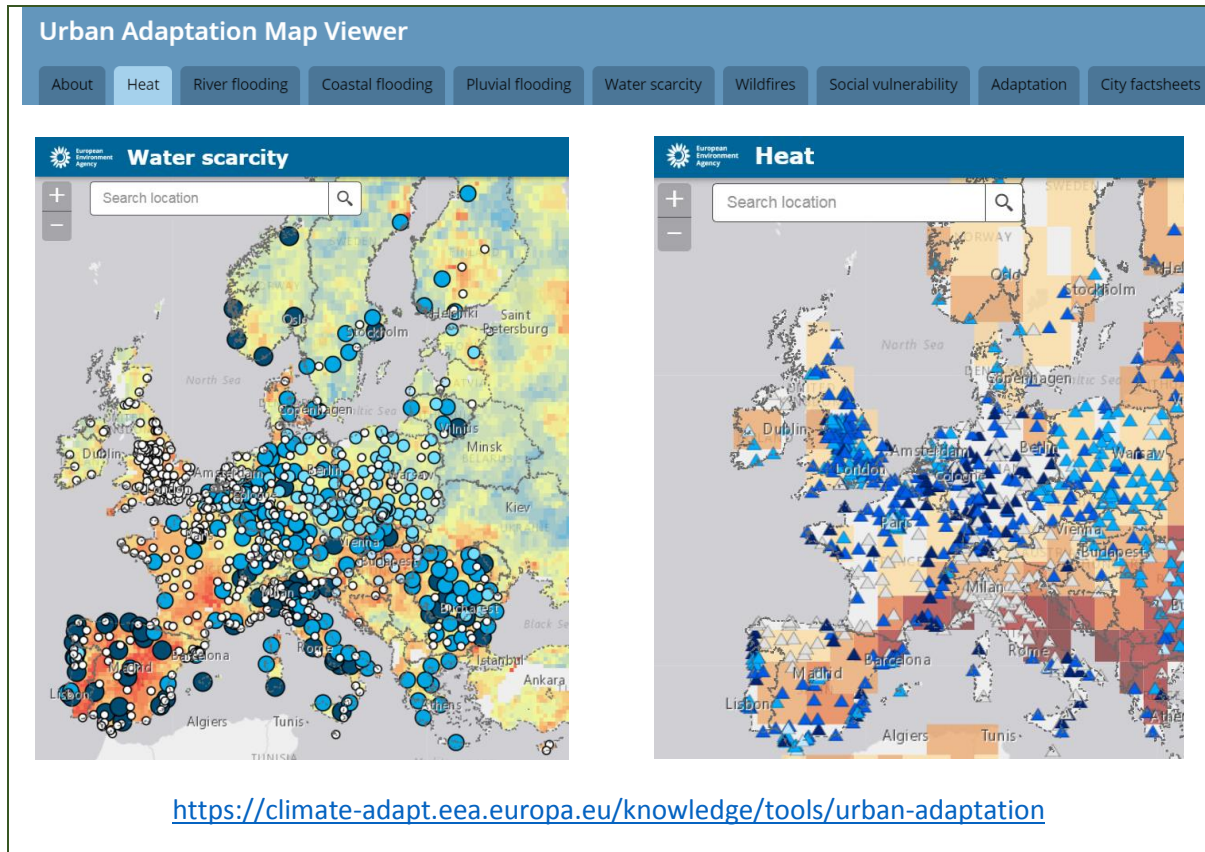
The Urban Adaptation Support Tool (UAST) is jointly developed and maintained by the European Environment Agency and the [Covenant of Mayors - Europe Office](#). The aim of the tool is to assist cities and towns in developing, implementing and monitoring climate change adaptation plans. The UAST outlines all the steps needed to develop and implement an adaptation plan and makes references to valuable guidance materials and other tools.

The image shows the logo for the Urban Adaptation Support Tool (UAST) on the left, which consists of a circular arrow with six numbered steps (1-6) and a leaf icon in the center. To the right of the logo is a list of six steps, each in a teal rounded rectangle:

- 1 Preparing the ground for adaptation
- 2 Assessing climate change risks and vulnerabilities
- 3 Identifying adaptation options
- 4 Assessing and selecting adaptation options
- 5 Implementing adaptation
- 6 Monitoring and evaluating adaptation

Below the list is the URL: <https://climate-adapt.eea.europa.eu/knowledge/tools/urban-ast>

The Urban Adaptation Map Viewer (UAMV) provides an overview of the current and future climate hazards facing European cities, the vulnerability of the cities to these hazards and their adaptive capacity. The UAMV collates information from various sources on the observed and projected spatial distribution and intensity of high temperatures, flooding, water scarcity and wild fires. It also provides some information on the causes of cities' vulnerability and exposure to these hazards, linked to the characteristics of cities and their population. Finally, the map viewer provides information on the state of play on adaptation planning and actions of European cities.



The webinar aims to improve awareness of these Climate-ADAPT urban knowledge elements and tools, and to promote their use, e.g. for local planning, awareness raising, participatory processes, project formulation etc.